



Indicates direct line of authority

Indicates member of Executive Cabinet

Indicates member of District Cabinet

SOLICITOR

BOARD OF SCHOOL DIRECTORS



**DR. ANDREA BERRY**  
SUPERINTENDENT OF SCHOOLS  
berryand@ycs.k12.pa.us



**DR. GEORGE FITCH**  
ASSISTANT SUPERINTENDENT OF STUDENT SERVICES  
fitchgeo@ycs.k12.pa.us



**DR. LETRECIA GLOSTER**  
ASSISTANT SUPERINTENDENT  
glostlet@ycs.k12.pa.us



**QUINN JOHNSON**  
CHIEF OF SCHOOL POLICE  
johnsqui@ycs.k12.pa.us



**ROBERT BERNHARD**  
DIRECTOR OF HUMAN RESOURCES  
bernhrb@ycs.k12.pa.us



**MARY MANNING**  
DIRECTOR OF SPECIAL EDUCATION  
mannimary@ycs.k12.pa.us



**KHERA BOWMAN**  
COMMUNICATIONS COORDINATOR  
bowmakhe@ycs.k12.pa.us



**SHAWN HAIN**  
BUSINESS MANAGER  
hainsha@ycs.k12.pa.us



**DR. JAIMIE FOSTER**  
DIRECTOR OF CURRICULUM & INSTRUCTION  
fostejai@ycs.k12.pa.us



**DR. LORI BOWMAN**  
FEDERAL PROGRAMS COORDINATOR  
bowmalor@ycs.k12.pa.us



**LAURA EDWARDS**  
SUPERVISOR OF STUDENT SERVICES  
edwarlau@ycs.k12.pa.us



**LESLIE ROLLER**  
ACCOUNTING MANAGER  
rolleles@ycs.k12.pa.us



**TRACI WRIGHT**  
HUMAN RESOURCES SPECIALIST  
wrihtra@ycs.k12.pa.us



**GINA CHRONIGER**  
SUPERVISOR OF SPECIAL EDUCATION  
chrongin@ycs.k12.pa.us



**DR. DANIELLE MILES**  
PROJECT DIRECTOR  
milesdan@ycs.k12.pa.us



**NICOLE SNYDER**  
DIRECTOR OF PIMS  
snydenic@ycs.k12.pa.us



**RICHARD MULDROW**  
SUPERVISOR OF FACILITIES BUILDING AND GROUNDS  
muldrri@ycs.k12.pa.us



**ANGELA GRAYSON**  
BENEFITS MANAGER  
graysang@ycs.k12.pa.us



**NATASHA MATHIS**  
SUPERVISOR OF SPECIAL EDUCATION  
mathinat@ycs.k12.pa.us

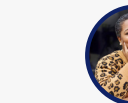


**JESSICA ALTHOFF**  
TECHNOLOGY COORDINATOR  
althojes@ycs.k12.pa.us

ATTENDANCE OFFICERS & NURSES



**MARK KAMYSZEK**  
DIRECTOR OF FOOD SERVICES (ARAMARK)  
kamysmar@ycs.k12.pa.us



**LASHAUNDA HAYNES**  
SUPERVISOR OF MATHEMATICS K-12  
haynelas@ycs.k12.pa.us



**CHARLOTTE BEAKLER**  
SUPERVISOR OF SPECIAL EDUCATION  
beaklcha@ycs.k12.pa.us

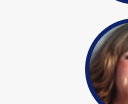


**STEVE PATRICK**  
DATA SUPERVISOR  
patriste@ycs.k12.pa.us

MTSS SPECIALISTS



**CINDY SWEENEY**  
CHILD ACCOUNTING  
sweencin@ycs.k12.pa.us



**ANGELA ASHLEY**  
SUPERVISOR OF ELA K-12  
ashleang@ycs.k12.pa.us



**DEBORAH HIOUTIS**  
COORDINATOR OF ELL  
hioutdeb@ycs.k12.pa.us



PRINCIPALS

GUIDANCE COUNSELORS



**AMY SMITH**  
ACCOUNTS RECEIVABLE  
smithamy@ycs.k12.pa.us



SCHOOL PSYCHOLOGY & SPEECH PATHOLOGIST

PARENT LIASIONS

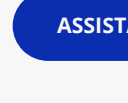
VACANT  
ACCOUNTS PAYABLE



SPECIAL EDUCATION SOCIAL WORKERS



SOCIAL WORKERS



ASSISTANT PRINCIPALS